



SA POOL SYSTEMS

Specialist lining solutions



**SA Pool Systems Limited
Cranmer Suite
Unit 1, St James Business Park
Radcliffe on Trent
Nottingham
NG12 2JP**

T: 0115 933 2798

E: info@sapoolsystems.co.uk

W: www.sapoolsystems.co.uk

ABOUT US

Based in Nottingham, at the heart of the UK, SA Pool Systems Limited is a business which has largely expanded and has completed many projects all across the UK and Europe.

Our specialist dedicated team have extensive experience in water barrier technology, and are fully trained to provide a quality, efficient and competitive service.

We specialise in lining all types of swimming pools, flumes, spas, steam rooms, changing rooms and chemical bund tanks, using our unique epoxy membrane lining system 'aqua-line'.

SA Pool Systems 'aqua-line' is an innovative, proven epoxy lining system, producing 100% waterproofing and exceptional chemical resistance, from potable liquids to the most aggressive chemicals. It is a continuous membrane producing a tough and durable liner, allowing the pool to be joint-free and requires very little maintenance.

Our non-slip 'aqua-bead' flooring system is a tested and proven product which will enhance any facility requiring non-slip walkways and surrounds.

We offer a complete service from site survey through to project completion, and follow up with our after-care programme, which is an important factor to maintain the systems we install.

We are members of CHAS, Constructionline and Safe Contractor, proving our commitment to health & safety standards to ensure your project runs smoothly.

NON-SLIP FLOORING

SA Pools 'aqua-bead' flooring system is a slip resistant surface that is extremely hard wearing.

It offers a safe, stylish and modern finish to any pool walkway, steps, surround and shower / changing room areas.

It comprises of coloured quartz beads suspended in a two pack epoxy resin providing increased grip and stability.

There are many benefits to our 'aqua-bead' flooring:

- Above average slip resistance (independently tested & certified)
- Chemical resistant therefore preventing staining and increasing lifespan
- 100% waterproof
- Can be applied to any sized surface
- Continuous surface
- Does not harbour bacterial growth
- Very low maintenance
- Available in a wide choice of colours – either as a solid colour or combination of 2 or more
- Modern in appearance
- Covered by our own guarantee**

**See our warranty terms and conditions

NON-SLIP FLOORING

Non-Slip Flooring For Around Swimming Pools

Pool areas are incredibly susceptible to slippery surfaces when the water comes in contact with non-slip-resistant tile the risk of slips and falls greatly increase. Our non-slip flooring for swimming pools is perfect for both commercial and residential pools. You can also use the flooring for spa areas, wet rooms and changing areas.

This type of flooring is crucial for leisure centres, schools and commercial environments with heavy foot traffic, not only to protect your customers but to protect your business from any potential legal action against you. At SA Pool Systems we are experts in non-slip flooring installation

Non-slip flooring for changing areas

Changing areas and wet rooms are, as you would imagine, wet areas. When water comes in contact with floors it creates a serious slip hazard. For this reason, it is crucial to choose a floor that offers a satisfactory slip resistance even when wet.

In this type of environment, you need safe and hygienic flooring, while ensuring the surface is non-slip, not difficult to clean and still aesthetically pleasing.

Our flooring comprises coloured quartz beads suspended in a two-pack epoxy resin and is therefore ideal for locker rooms and wet rooms. Tough and hard-wearing it can handle heavy foot traffic whilst also being comfortable to walk on.

*Please see our terms and conditions

NON -SLIP FLOORING



NON-SLIP FLOORING COLOUR COMBINATIONS:



EPOXY RESIN LINING

Our epoxy resin lining system is an affordable and tangible solution to the common pool tank problems faced.

Traditional tiled swimming pools, indoors and outdoors, are prone to many maintenance issues during their lifetime. Cracked and broken tiles, wearing of grout joints, blistering of non epoxy liners, all cause leaks and present a health hazard to the user.

Grout is a haven for bacterial growth and can often discolour, leaving your pool with an unattractive appearance.

Our epoxy resin lining system eliminates all these issues and has many benefits:

- Cost effective
- Time effective installation
- Can be applied to any surface (following the correct preparation)
- High resistance to heat, abrasion and chemicals
- Reinforces based laminate that will endure thermal shock
- Does not harbour bacterial growth
- Permanent seals and protects from future leaks
- No joints as a continuous membrane
- Colourfast - doesn't fade over time
- Very low maintenance
- Modern in appearance
- Customisable - you can have any design or artwork incorporated
- Covered by our own guarantee**

**See our warranty terms and conditions

EPOXY RESIN LINING

Our swimming pool refurbishment services are ideal for anyone who wants to repair their current pool or even if you are looking for a redesign.

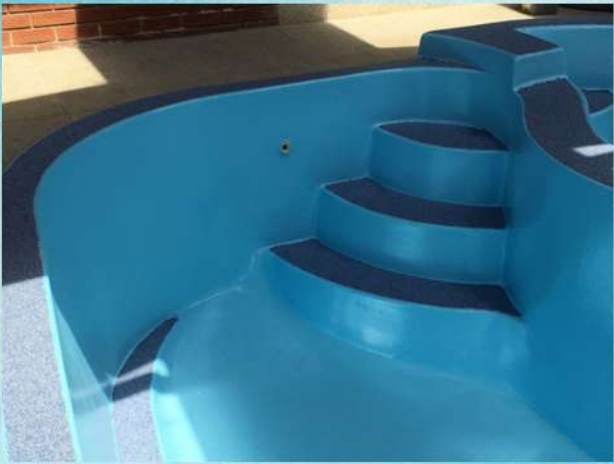
SA Pool Systems is the industry leader for swimming pool repairs, renovations, inspections, liner replacements, leak detection services as well as other related services. We have been providing quality services across Nottingham and the UK.

Swimming pool relining is important in order to ensure the safety of your customers. Repair work is a great way to avoid incurring those larger more costly problems that could close your pool down for a period of time.

Some signs that your pool liner may need to be replaced are:

- Fading – If you notice that the colour of your pool liner has faded it may be time to think about replacing it. If your pool is outdoors it may be subject to sun damage which can speed up the fading process and can make your pool liner more volatile causing punctures and breaks.
- Wrinkling – A wrinkled liner is a classic sign that your swimming pool's chemistry has not been maintained. Wrinkling is not only unsightly but can be a sign your liner has become brittle and is therefore only a matter of time before a tear or rip.
- Leaking – Some water loss is normal as it can be caused by customers splashing around or simply by evaporation. However, if you notice a significant amount of water loss you may have a puncture in the pool liner. Depending on the size of your pool and the tear you may need a complete replacement.

EPOXY RESIN LINING



FLUME EPOXY LINING

Flumes and chutes can often be uncomfortable due to uneven and exposed joints in the assembly. Using the same method as our swimming pool lining system, 'aqua-line', we can solve this problem by giving the flume a continuously smooth and even ride.

We can apply the lining to small areas or we can line the whole ride giving a modern, fresh look and feel.

The system is hardwearing but remains flexible enough to move and twist with the ride, ensuring the ride will remain smooth and watertight for many years.

Exposed joints in flumes, often outdoors, can be subject to vandalism. Our system ensures that the joints cannot be tampered with or any foreign object be forced into the flume from the outside.

The benefits of an 'aqua-line' system for your water ride are:

- Minimises risk of injury
- Continuous membrane, giving a more enjoyable ride
- Hygienic – will not support bacterial growth
- Available in many colours
- Artwork / logos can be produced and installed
- Eliminates the need for slide mats
- Covered by our own guarantee**

**See our warranty terms and conditions

FLUME EPOXY LINING



DRAINAGE GRATING & CHANNELS

HDPE is a modern plastic and is a perfect substrate for swimming pool drainage grates & drainage channels. Extremely hard-wearing, it has excellent residual strength combined with its high resistance to chemicals and acids associated with the swimming pool environment.

Its smooth surface increases water motion and ensures effective drainage whilst also being temperature tolerant, with a range from -50°C to +100°C.

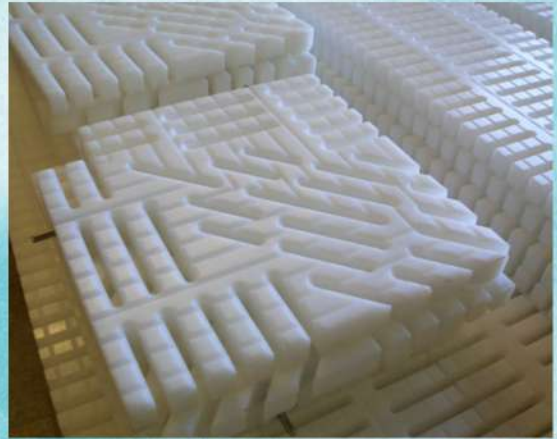
We manufacture our drainage grating and channels using large format CNC machines allowing every project to be totally bespoke, whatever the shape, size or thickness. We can create the required product to suit your needs.

Our swimming pool grates are manufactured in approximate 1 metre lengths allowing cleaning regimes to be easily maintained due to their ease of removal.

We have standard patterns designed to allow maximum water drainage for certain applications and others to increase longevity where required or we can create any design using our CAC/CAM design software, including T-Sections and curved grating. All our HDPE materials are available in a variety of colours and can be matched to a RAL colour of your choice to match your colour scheme.

Maintenance of our swimming pool drainage systems is a breeze. Our grates are produced in approximately one-metre lengths, which simplifies removal for cleaning. Additionally, we offer a full suite of swimming pool refurbishment and maintenance services to keep your pool in top-notch condition.

DRAINAGE GRATING & CHANNELS



FILTRATION & PLANT ROOM

SA Pool Systems 'aqua-line' is an innovative, proven epoxy lining system, producing 100% waterproofing and exceptional chemical resistance, from potable liquids to the most aggressive chemicals. It is a continuous membrane producing a tough and durable liner for chemical bund/balance/sump/filtration tanks.

Damaged, leaking and corroded tanks can be harmful to the environment and to the health and safety of personnel, as well as causing product loss and wastage, affecting company profitability.

Extensive savings will be made by having your tanks refurbished, as well as significantly extending their life time.

Our tank repair and / or refurbishment service offers on site solutions for damaged, leaking and corroded tanks.

Preparation is imperative and is carried out by our own fully trained staff, following health & safety guidelines to meet the required standards.

We also specialise in plant room installation and pool filtration. Our installation team offer free site surveys, recommendations, designs and specifications for your bespoke plant room.

We work closely with our customers to ensure that 'out of action' time is kept to a minimum.

AFTERCARE AND MAINTENANCE

SA Pool Systems Limited offer an aftercare and maintenance service that will prolong warranties on all works carried out by us, and the longevity of your facility.

This service can be tailored to your needs and demands of the day to day running of your facility.

At SA Pool Systems we specialise in swimming pool maintenance for both residential, commercial, and public swimming pools. From one-off repairs to ongoing maintenance visits, we will keep your pool clean, safe and appealing.

We pride ourselves on building strong relationships with our customers and provide flexible aftercare services to ensure you enjoy your swimming pool installation for years to come.

When you choose an aftercare and maintenance package with us, our experienced team will assess any potential problems with your facilities, and offer solutions to prevent serious issues from arising. This will save you money and give you the ultimate peace of mind.

Additionally, using our comprehensive aftercare and maintenance service extends your warranties on any work carried out by ourselves, and can be tailored to your needs.

We always aim to keep disruption to a minimum, so we're happy to arrange maintenance and repairs around the times you tend to use your pool.

Get in touch now to see how we can tailor this service to meet your needs.

OUR CERTIFICATION

SA Pool Systems Limited have worked hard to obtain certification to ensure we meet the required Health and Safety criteria for any job, domestic and commercial.

You can have peace of mind knowing we have the relevant experience, qualifications and certification to complete your project to a high quality.

All of our site operatives are CSCS qualified and have been First Aid and Health and Safety trained with ongoing updates as and when they come in to force.

